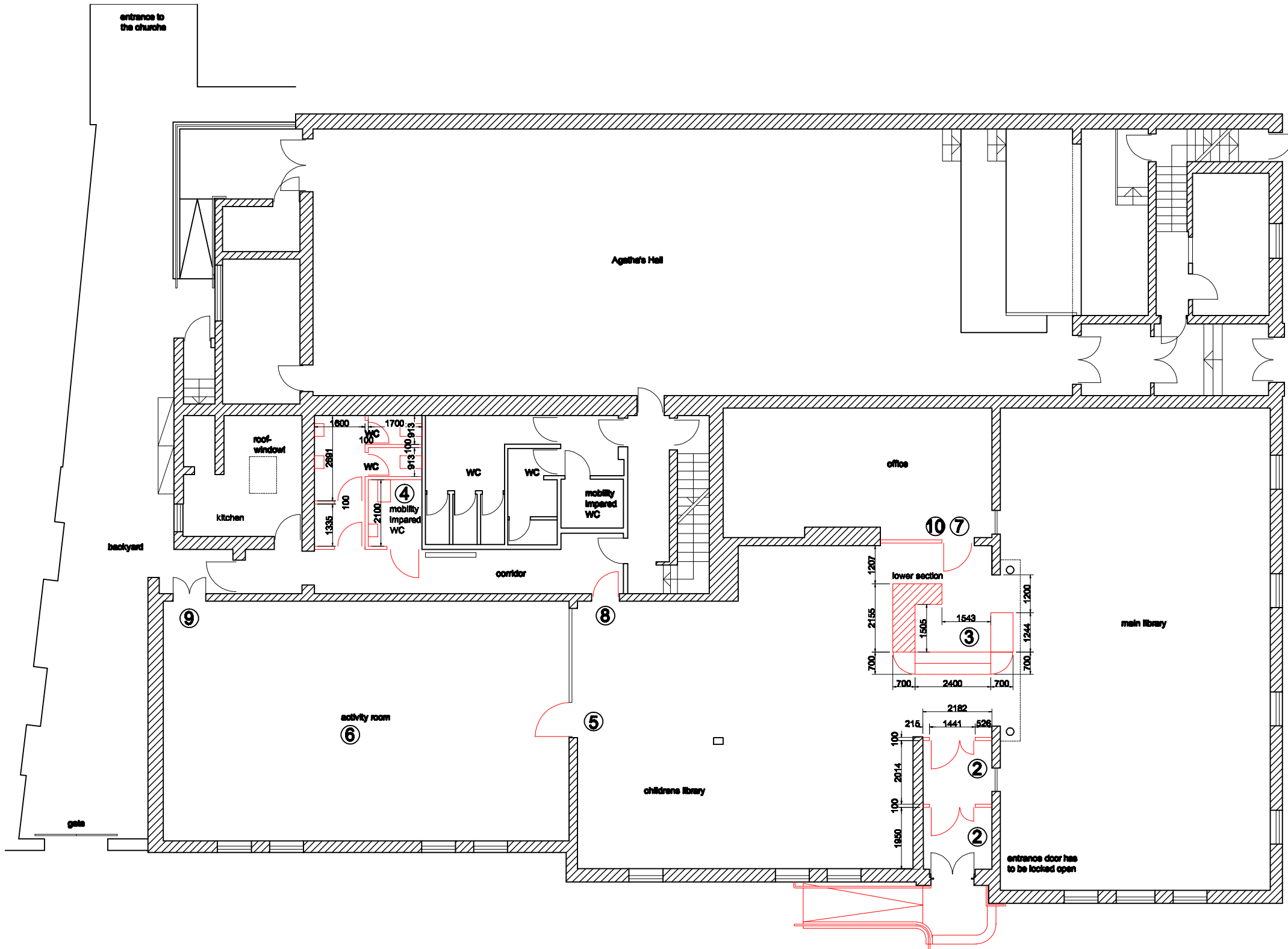


NOTES
 This drawing is the copyright of the Architect and must not be reproduced or used without permission.

All dimensions are approximate and are to be checked on site by contractor prior to commencement of all work. Discrepancies should be reported immediately.

DO NOT SCALE THIS DRAWING.
 All dimensions are in millimetres



- 1 rearrange ramp (surface, landing), stairs (unify rise of steps) and handrails (300mm endings)
- 2 provide new doors sufficient for accessibility (width:900mm, glazed panels)
- 3 provide a lower counter-section (high=760mm)
- 4 provide a mobility impaired WC
- 5 provide a kick plate for the activity room
- 6 provide a hearing enhanced system
- 7 replace the locking mechanism/keypad
- 8 provide an automatic door opener
- 9 repair the flooring by the library hall
- 10 provide markings at the glazed partition (office)
- 11 provide new, tactil signs with good contrast

