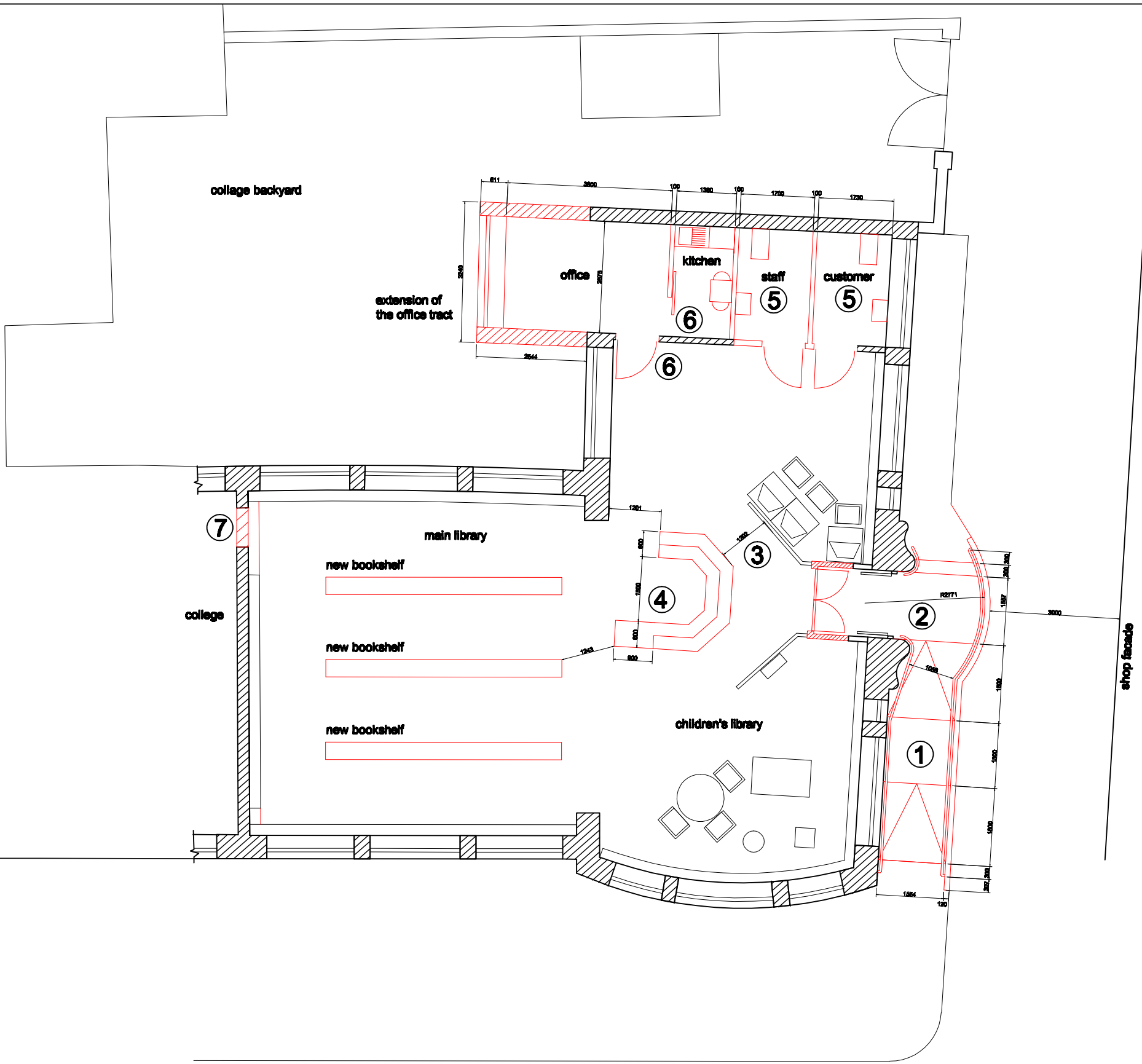
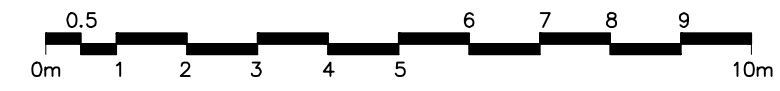


NOTES
 This drawing is the copyright of the Architect and must not be reproduced or used without permission.
 All dimensions are approximate and are to be checked on site by contractor prior to commencement of all work. Discrepancies should be reported immediately.
 DO NOT SCALE THIS DRAWING.
 All dimensions are in millimetres



- 1 construct a new ramp (gradient 2 X 1:12), steps, railings and handrails
- 2 provide an entrance sufficient for accessibility (automatic door); entrance doors keep unchanged and have to be locked open at opening times
- 3 enlarge the space between the counter and the barrier by moving the counter
- 4 provide a new counter
- 5 provide a mobility impaired WC (door width:900mm)
- 6 provide new door (width:900mm)
- 7 close the fire-exit door to the college
- 8 provide new, tactile signs with good contrast
- 9 change light switches to an accessible high



REVISION	DRAWN	APPROVE	DATE	REVISION
number	drawn	approved	date	description
001	18/08/2007			
002	1:50			
<small> Please remember to refer to performance standards, specifications and to the contract documents and to the contract documents for all dimensions and to the contract documents for all dimensions and to the contract documents for all dimensions. </small>				
client	Dublin City Council	project	Universal Access to 9 Libraries Marino	 <small>CONSARC DESIGN GROUP 8 WINDSOR PLACE DUBLIN 2</small>
contract	Proposed Plan Ground Floor	revision	0	
job no.	BC07_265	drawing no.	MO_262b	<small> tel: +353 1 452 2222 fax: +353 1 452 2222 www.consarc-design.co.uk email: info@consarc-design.com </small>